
Scoop Stretcher PA-05

Instructions manual



PROMEBA

EMERGENCY & RESCUE

I. Applicable scope

It is mainly used for hospitals, sports, ambulance and battle fields carrying patients and wounded person.

II. Product Features

1. Made of aluminum alloy material, separable rigid structure, with clutch devices at both ends, the stretcher can be separated into right and left 2 parts, no need to move the patient's at original place, the patients can be quickly shovel into or out from under the body, reduce secondary injury to the patients.
2. Concave surface, so that patients can be on the stretcher firm.
3. The length of the stretcher can be adjusted to three different positions based on the patient's height
4. It characterized by its being light-weighted, use-safely and easy for sterilization.

III. Parámetros técnicos (Tolerancia ± 5%)

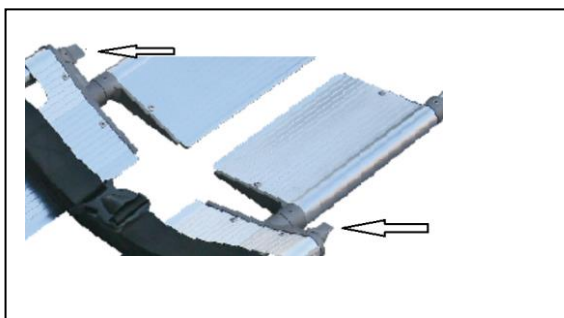
Model	Max length (L×W×H)	Folded size (L×W×H)	Loading Bearing	Used length adjustment
PA-05	211×42×7cm	165×42×7cm	170KG	165~200cm

IV. Use Method

1. According the patient's height, pull out two buttons on both sides(Picture 2), stretching or shortening the length (Picture 3), the length of the stretcher can be adjusted to three different positions, each position corresponds to a hole (Picture 4),choose suitable position, release the button at the level state, keep the lock button locked completely.

Hole 0 is the initial position, hole 1 is 1 position, hole 2 is 2 position, hole 3 is 3 position(**note: 1 and 2 positons are for normal use**). The length of the initial position H0 = 167cm, 1 position H1 = 178cm, 2 position H2 = 189cm, 3 position H3 = 200cm. (Picture 6)

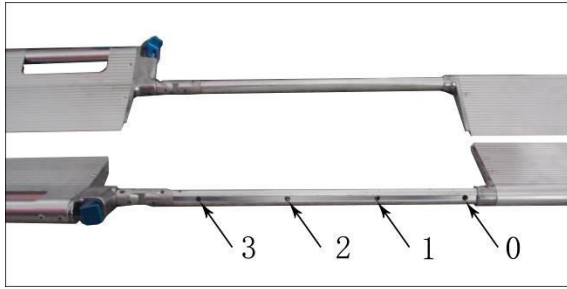
WARNING: When adjusting the length of the stretcher to prohibit more than 3 positions, that is the length is than 200cm.



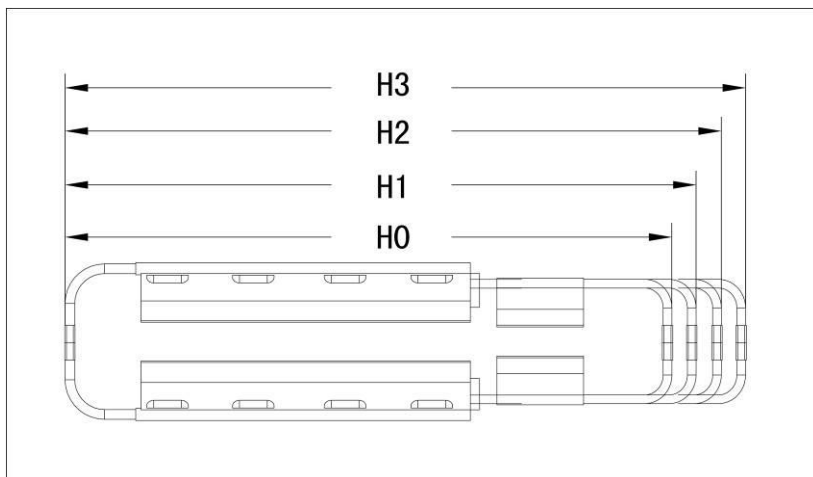
Picture 2



Picture 3



Picture 4

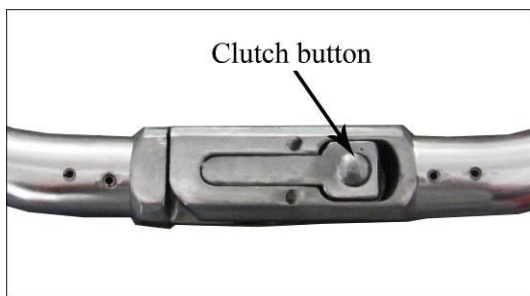


Picture 5

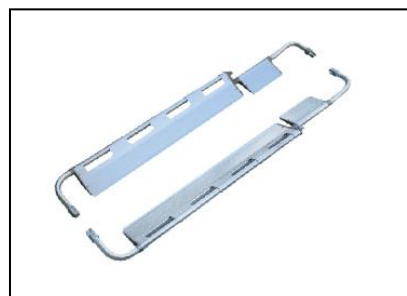
2、 Press the clutch button at both ends of the stretcher, so that a stretcher can be separated into two parts. (Picture 6, Picture 7)

Warning: Be sure the clutch button is in lock state when transport the patients.

Advertencia: asegúrese de que el botón del embrague esté en estado de bloqueo cuando transporte a los pacientes.

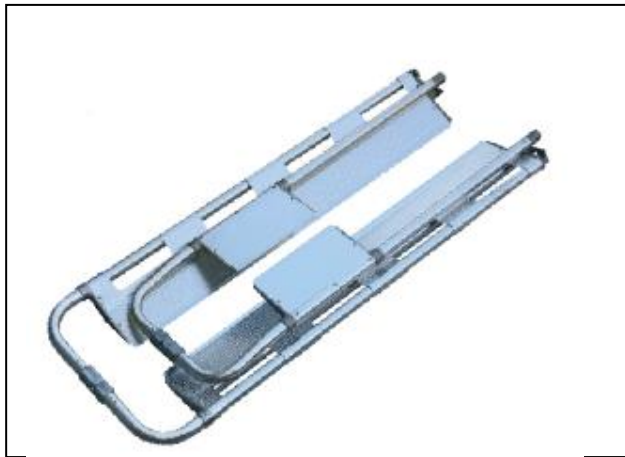


Picture 6



Picture 7

3. After using, can be stored as folded. Stretching the length to the maximum state then folded (Picture 8).



Picture 8

VI. Notes

1. When transporting, be sure the clutch buttons at both ends are locked, use safety belts.
2. After adjusting the length, be sure the position is locked, please do not use non-locked stretcher so as not to harm patients again. When adjusting the length of the stretcher to prohibit more than 3 positions that is the length is than 200cm.

VII. Maintenance

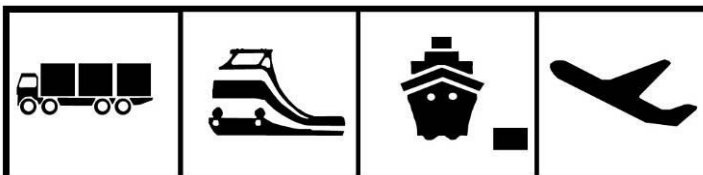
1. Keep clean as routine (incl. disinfect)
2. Check if any parts loose or not as usual.

VIII. Storage

1. Store this stretcher in the place of damp proof and non-corrosion environment.
2. Storage, transportation, as shown by the box stacking.

IX. Transport

1. Be transferred by common transporting tools : plane、 ship or road.
2. Stretcher can be manually handling



1. Packed in high-durable carton.
2. Attachments: certificate, user's manual.